

## WARRIOR CONNECTION PEER/MENTOR PROGRAM

An important part of Pink Aid's mission is "to empower breast cancer survivors to heal by helping and inspiring others."

Pink Aid's Warrior Connection is open to all breast cancer survivors, or "warriors" as we call them, who want to join the Pink Aid family to get involved and "pay it forward."

This year, Pink Aid Connecticut is piloting



a Warrior Connection Peer Mentorship Program to help patients newly diagnosed with breast cancer that don't know where to turn and need compassionate support. This program is open to all breast cancer survivors, whether or not they are financially in need.

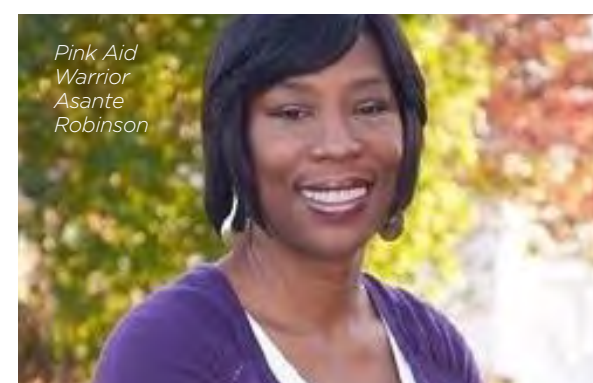
We will match up recently diagnosed patients with a survivor/mentor that shares a similar breast cancer diagnosis, treatment plan or lives in their area to offer navigation and emotional support.

Please get in touch if you were recently diagnosed with breast cancer and would like to be matched with a Warrior Connection Mentor or if you are a survivor and would like to become a Mentor. This program is open to all, regardless of financial need. We look forward to building a strong and supportive warrior community!

For more information or to get involved: [info@pinkaid.com](mailto:info@pinkaid.com)

UP CLOSE & PERSONAL

## "BREAKING THE SILENCE" ON WOMEN OF COLOR AND BREAST CANCER



Pink Aid  
Warrior  
Asante  
Robinson

2017 Pink Aid Warrior Asante Robinson has vowed to "break the silence" among African American women. She recently held a discussion about breast cancer at the Union Baptist Church in Stamford, CT. Nearly 100 African American women attended her second annual event to learn about risk factors, genetic mutations and the importance of early detection. Breast oncologist Dr. Richard Zelkowitz and breast

surgeon Dr. Valerie Brutus joined Asante to dispell myths and arm the audience with vital information to further understand the disease and make sound decisions.

Asante has formed the "Queen's Survivor Network" to encourage open dialogue in underserved communities. She believes bringing together black leaders and medical professionals will educate and inspire women of color to be proactive in their breast health routine.

Studies have shown that African American women have a predisposition to breast cancer, much like Ashkenazi Jewish women.

"My mother died from breast cancer in 2004 and in 2016, despite annual testing, I developed Triple Negative Breast Cancer, a cancer twice as common in black women and more common in premenopausal women and those with a BRCA1 gene."

Asante believes shared experiences, being your own advocate, and regular care is essential to surviving all types of breast cancer.



SPONSOR HIGHLIGHT

## MAPLEWOOD SENIOR LIVING



Welcome to Maplewood Senior Living - Independent Living, Assisted Living, Memory Care, Skilled Nursing & Rehabilitation. From the moment you visit Maplewood's senior living communities, you will be surrounded with warm, inspired environments, and services and amenities that define "the good life" at every turn. You will soon discover a lifestyle that feels natural yet new; exciting yet secure. At Maplewood Senior Living communities, you and your loved one will experience this instinctive feeling, day after day, season after season.

FOUNDING SPONSORS:

MITCHELL STORES



wsaa, inc.

CTC&G



2019 CORPORATE SPONSORS

**PINK STAR DIAMOND SPONSOR**  
MITCHELL STORES  
THE WILLIAM T. MORRIS FOUNDATION

**PINK TOPAZ SPONSOR**  
THE BAINBRIDGE COMPANIES  
JP MORGAN CHASE & CO.  
MAPLEWOOD SENIOR LIVING

**PINK PEARL SPONSORS**  
AUDI, MERCEDES-BENZ & PORSCHE OF FAIRFIELD  
DR EMILY DRIESMAN OF EMBRACE ORTHODONTICS  
DAVID FALK/NEWMARK KNIGHT FRANK  
HARTFORD HEALTH CARE  
INTERLUDE HOME  
MARCIA SELDEN CATERING & EVENTS  
NATRELLE  
MATTERA CONSTRUCTION CO., LLC  
NORWALK RADIOLOGY & MAMMOGRAPHY CENTER  
POINT 72  
RESTORATION + RECOVERY  
SPECS OF FAIRFIELD/WESTPORT/DARIEN

**PINK TOURMALINE SPONSORS**  
COHEN & WOLF, P.C.  
CONCIERGE PHYSICIANS OF WESTPORT  
CRN HELPING HANDS  
DERMATOLOGY PHYSICIANS OF CT  
GENOMIC HEALTH, INC.  
GREENWICH MEDICAL SPA  
HOLOGIC  
JUSTAN GARCIA OF RICK GARCIA SALON  
KATTEN MUCHIN ROSENMAN LLP  
DR. MARILYN BLANEY/IMPERIAL DENTAL ASSOCIATES  
MILLIE RAE'S  
MUSES ESTATES / MINA DISTRIBUTORS  
NEW BEAUTY & WELLNESS  
NORWALK HOSPITAL  
WILLIAM RAVEIS CHARITABLE FUND  
SHARKEY'S CUTS FOR KIDS  
SOLEIL TOILE FINE LINGERIE & SWIMWEAR  
STARK  
SUPERIOR SEAFOOD  
SUSAN TRACY'S HOUSE WHISPERERS

# PinkInk

FALL/WINTER 2019



Pink Aid's 9th Annual Luncheon and Fashion Show had all the makings of the perfect "love potion" — glamour, flower power and lots of love.

Co-chaired by Pink Aid runway warriors Debbie Katz and Katherine Matero, the excitement and joy in the room was electric. With a sold-out house, Mitchells of Westport was transformed by the groovy Love Potion #9 theme, found everywhere from event graphics and music to retro catering on TV trays and servers in mod dresses and go-go boots.

Mitchells staged a stunning fashion show of "Fall '19 Must-Haves." Then, attendees were inspired by not one, but two phenomenal speakers, each sharing their journeys: the inimitable entertainment journalist/best-selling author/fashion & beauty expert, Giuliana Rancic and dynamic former Pink Purse recipient Dr. Joan Miller.

A show-stopping finale of triumphant Warriors strutting the runway with style and grace brought down the house!

Thanks to everyone that contributed work, goods, funds and compassion to help patients across Connecticut. Now it's time to start planning #10!

p.1 LOVE POTION #9  
ROCKS THE HOUSE!

p.3 WARRIOR  
CONNECTION PEER/  
MENTOR PROGRAM

p.5 PINK POSSE SENDS  
EXTRA COMPASSION

The Pink Aid Warrior Connection's newest program matches newly diagnosed patients with peer mentors to lend navigational and emotional support.

Pink Posse takes compassion to new heights, providing extra supplies and emotional support to underserved patients in the throes of treatment.





Pink Aid's Ninth Annual Luncheon & Fashion Show — Oct. 3, 2019

All photos courtesy of Connecticut Cottages and Gardens and Joe Crawford.

NEW INITIATIVE

PINK POSSE PROVIDES EXTRA COMPASSION TO PATIENTS IN NEED

At Pink Aid, we understand that while battling breast cancer, finances can be very tight and personal situations extremely trying. A reviewer on our Pink Purse Committee, Cari Kaplan was so moved by some of the stories of our most vulnerable applicants, that she wanted to do something more. Out of that compassion, Pink Posse was born.

Pink Posse is a group of people in the Pink Aid community who volunteer to help patients in dire need. By "help," this could mean sitting with a patient during treatment, dropping off a meal or donating a piece of furniture or some gently used household items (linens, towel, etc.).

To get assistance from Pink Posse or to volunteer, contact Cari Kaplan



ON LONG ISLAND

"STRONG ISLAND" PINK POP LUNCHEON: A 360-DEGREE SENSORY EXPLOSION!



Mitchells of Huntington popped with excitement and compassion at Pink Aid Long Island's "Pink Pop" fundraiser. Guests were treated to a sensory explosion of the event theme with mod Warhol-like graphics setting the tone for an uplifting and moving afternoon. Attendees were moved by the inspiring personal story of Sports Personality and Pink Aid Co-President Deb Placey, told in public for the first time. A stunning "Best of Fall 2019" runway show was staged by Mitchell Stores, followed by a Celebration of Life Fashion with a spirit that can only be found on Strong Island.

YEAR-END GIVING

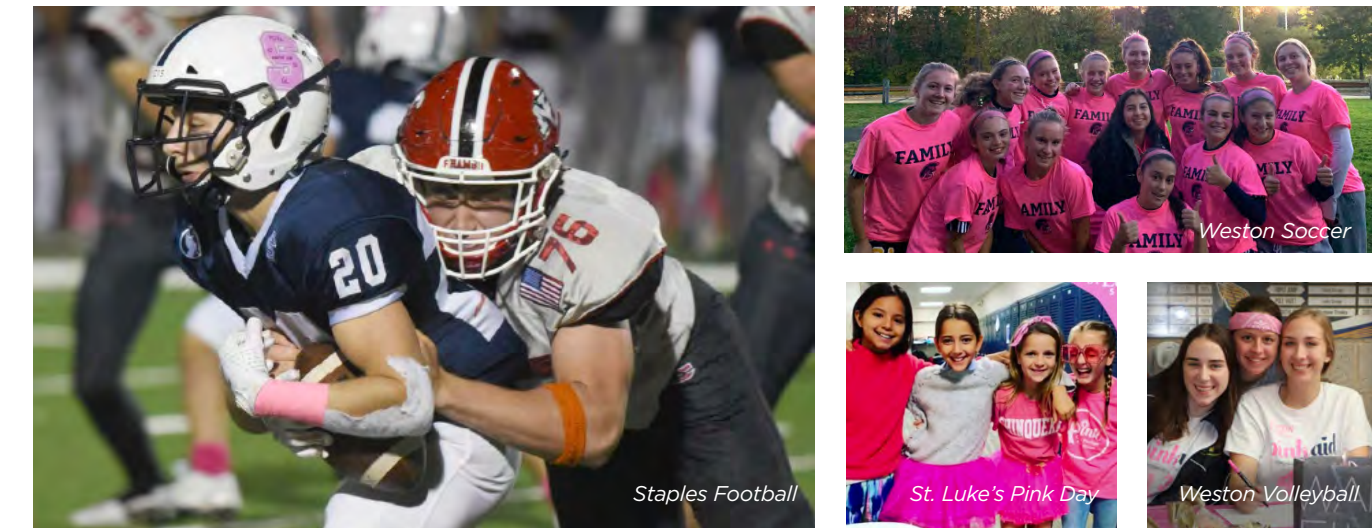
SPREAD COMPASSION WITH A 2019 HOLIDAY DONATION



Pink Aid is now able to receive either stock or cash donations. To make a personal or corporate donation, go to pinkaid.org or mail donations to Pink Aid, P.O. Box 5157, Westport CT 06881.

LOCAL FUNDRAISING

PLAY 4 PINK: SCHOOL TEAMS



Thank you once again to Staples Football, Staples Field Hockey, Weston Football, Weston Volleyball, Weston Girls Soccer, and St. Luke's School for supporting Pink Aid in the month of October.

PINK AID FUNDRAISING AROUND TOWN



Thank you to the following for supporting Pink Aid in the month of October: Tusk Home Design | Kerri Rosenthal Blocks of Love Bridgewater Chocolate | Susan Vanech "Cards for Curves" Poker Evening | Intensity Fitness | Westport & Stamford Chamber of Commerce Andora Handmade Leather Handbags and a special thanks to Ronit at Lera Jewels for making us feel the sparkle before our big event!